

MONTHLY MEMBERSHIP PROGRESS REPORT

LOCATION INDIA

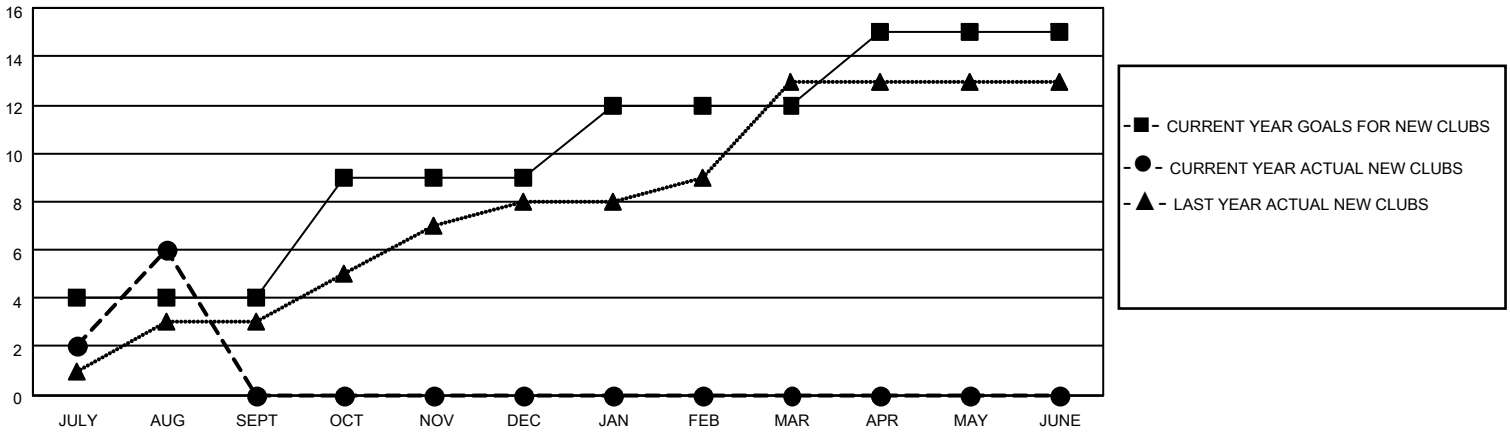
District 318 E

Results as of: 8/31/2023

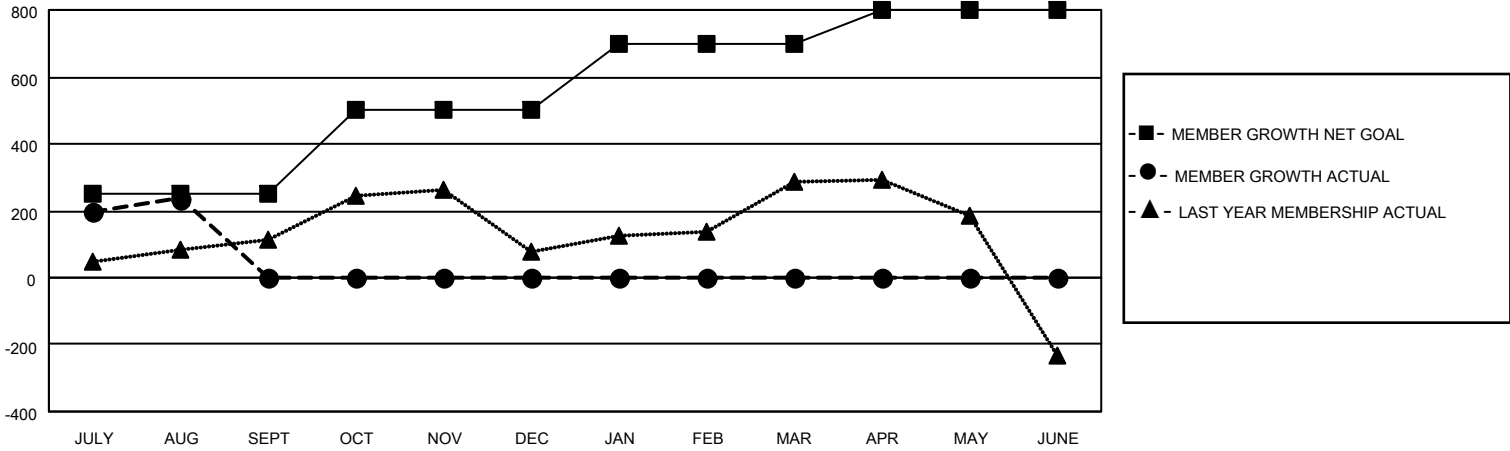
Clubs			
RESULTS FOR 2023-2024			
QUARTER	NEW CLUB GOAL	NEW CLUBS	DROPPED CLUBS
JULY/AUG/SEPT	4	6	1
OCT/NOV/DEC	5	0	0
JAN/FEB/MAR	3	0	0
APR/MAY/JUNE	3	0	0

Members			
RESULTS FOR 2023-2024			
QUARTER	MEMBER GROWTH NET GOAL	MEMBER GROWTH ACTUAL	DROPPED MEMBERS ACTUAL (including transfers)
JULY/AUG/SEPT	250	430	178
OCT/NOV/DEC	250	0	0
JAN/FEB/MAR	200	0	0
APR/MAY/JUNE	100	0	0

GOALS AND ACTUAL NEW CLUBS CUMULATIVE



GOALS AND ACTUAL MEMBERS CUMULATIVE



DROPPED CLUBS: 1	
DROPPED MEMBERS	
DECEASED	4
CLUB CANCELLED	18
OTHER	156
TOTAL	178

108 CLUBS OF 179 ADDED 1 OR MORE NEW MEMBERS

[CLICK HERE FOR CUMULATIVE MEMBERSHIP DATA](#)

<u>GENDER DISTRIBUTION</u>	
MALE	4,983 (78.75%)
FEMALE	1,345 (21.25%)
NON BINARY	0 (0.00%)
PREFER NOT TO ANSWER	0 (0.00%)
TOTAL FAMILY UNIT MEMBERS	2,283
FAMILY MEMBERS PAYING HALF DUES	1,208